

1 EnviroSys release notes: version 9.0 (April 2022)

1.1 Highlights

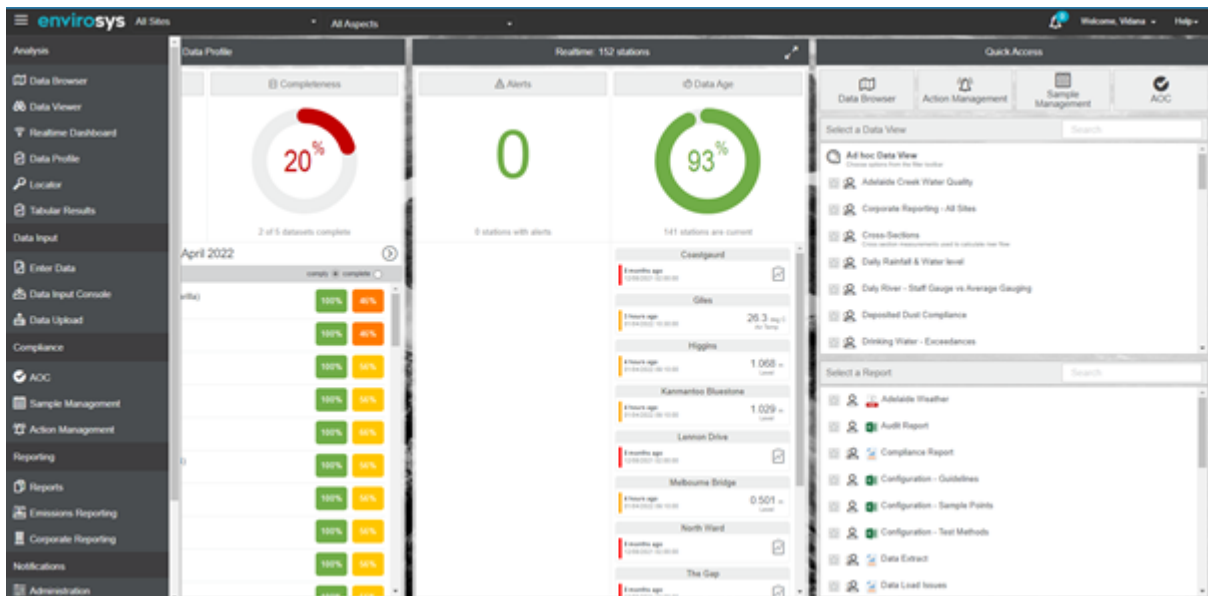
EnviroSys version 9.0 has been released to address change requests and fixes. This release includes all previous changes and fixes from the previous release (8.5.4).

1.2 New features

Rebranding and unified user interface

Version 9.0 includes styling improvements to reflect the acQuire brand and the launch of a new EnviroSys logo. Significantly, and most visibly, this release addresses usability by combining the *Portal*, *Big Button* and *Classic* interfaces into a single, unified interface.

IMAGE: EnviroSys Global menu



- Introduction of the Global menu to access *all* features in EnviroSys seamlessly, regardless of being native Portal or Classic screens.
- Classic interface screens restyled to be more consistent with Portal screens.
- All Help links will use the new version 9.0 documentation site, as well as a link to the acQuire EnviroSys Knowledge Base from the Support dialog.
- Site/Aspect filters are enabled/disabled where applicable when navigating the user interface.
- Saved searches are available within the unified interface.
- Administration screens (Programs, Data Types, Sites, Sample Points, Devices, Business Contacts and Distribution Groups) reviewed for deprecated and mandatory fields. (EN-8573)

Direct access to the Classic interface using the Global menu will be limited to Administrators (using Security Group permissions) with the plan to stop supporting direct access in a future release.

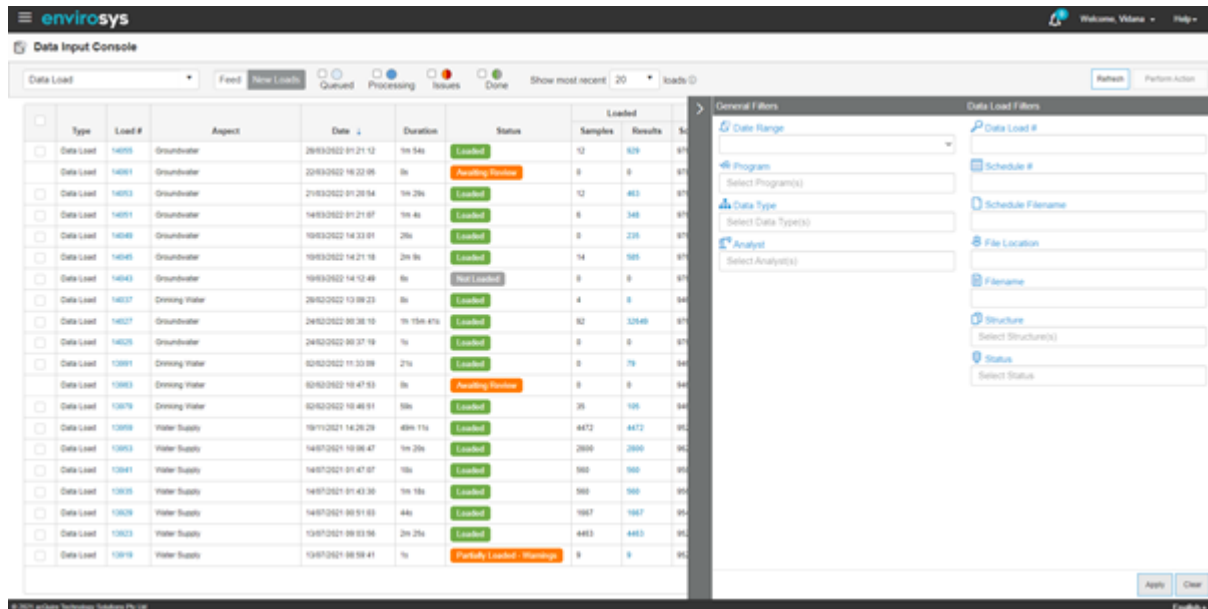
The following Big Buttons have been deprecated and not migrated to the Global menu due to being superseded or no longer required:

- ESysGIS
- Realtime (Classic)
- Dashboards (can be enabled, if required)
- Data Summariser
- Offline Application
- Device Register
- Obligations
- BOM Radar
- Audits
- Inspections.

Data Input Console

Improved Data Input Console to view, manage and monitor data feeds from all data sources, such as Data Loads, Realtime, Data Entry, Historian, Database extracts, etc.

IMAGE: Data Input Console



Improved searching of data feeds:

- Improved quick and advanced filters
- View the Data Load data in a Data View
- Perform actions in bulk, such as setting the status on Data Loads to unload, reload and load as saved action comment.

Review Data Loads:

- View and action Test Method and Sample Point mappings
- Tabs for Logs, History, Notes and Attachments
- Perform actions, such as set to Loaded, Unload, Reload and Delete
- Navigate to the Definition configuration screen.

New Loads tab:

- View Data Load Structures and Loaded Definitions
- Upload files.

Simplified security and acQure Licence Manager

Version 9.0 standardises and simplifies managing Users, Roles and permissions incorporating:

- New cloud-based licensing solution (acQure Licence Manager (my.acquire.com.au)) integrated into the EnviroSys platform (web and mobile)
- Named users implemented
- Security Groups changed from unstructured and highly configurable to three strictly-defined user types: Standard, Advanced and Administrator
- Remove unnecessary configuration of underlying Security components and sensitive System Parameters.

Administrators will allocate named users and type (licence level) in the acQure Licence Manager. Licensed users are matched to the EnviroSys user using the **Email** or **Alternative Identifier** fields. On successful login, the User will be verified in the acQure Licence Manager and automatically allocated to the Security Groups for their licence level. Existing Security Groups will be allocated the applicable licence level. This removes the need for Administrators to allocate/maintain Security Group allocation for users in EnviroSys.

User licence details can be viewed in the acQure Licence Manager and in EnviroSys. Users can view their details (such as licence level, validity dates and last successful check) under **My Profile**. Selecting **Settings > Security** from the Administration menu lets Administrators view:

- User's licence details in the User screen
- Security Group details that now display access permissions first.

IMAGE: User Profile - Licence Details

The screenshot shows a web form titled "Standard, Qa (qastandard)". The form contains several input fields and read-only fields:

- Standard:** A dropdown menu with "Standard" selected.
- Organisation:** An input field with "Organisation" entered.
- Phone Number:** An input field with "Phone Number" entered.
- Mobile Number:** An input field with "Mobile Number" entered.
- Email Address:** An input field with "esysqastandard@gmail.com" entered.
- Licence Level:** A dropdown menu with "STANDARD" selected.
- Licence Valid Until:** An input field with "Invalid date" entered.
- Latest Licence Check:** A read-only field displaying "07/02/2022 19:17:37".
- Latest Successful Licence Check:** A read-only field displaying "07/02/2022 19:17:37".

At the bottom right of the form, there are three buttons: "Close" (blue), "Reset" (grey), and "Save" (blue).

Administrators will have access to all Programs and Sites. Super Users are no longer required by client Administrators, but are available for acQure support. Select **Security > Licence Server** in the Administration menu to display the **Licence Server** screen, which lets Administrators view the licence server connection details and navigate to the acQure Licence Manager. Selecting **Settings > New Features** in the Administration menu simplifies deployment for acQure support.

The acQure End User Licence Agreement (EULA) is now accessible from the **Help > About** dialog. Administrators should also refer to the acQure [Knowledge Base](#) for more information on configuring users with the acQure Licence Manager and the Licence Fact Sheet.

Sample Management

Improved behaviour for Schedules with multiple revisions including:

- Visibility of Schedule revisions
- Improved **History** tab
- Plan view for an active Schedule will merge any subsequent schedule revisions
- Allow rescheduling across revisions.

(EN-8744)

Chain of Custody: Allow the Chain of Custody document file name to be configurable using System Parameter COC_NAME_FORMAT. (EN-8784 and EN-8741, COC Filename and Location Code)

Problem/improvement fixes from 8.5.5, as detailed in the [Problem fixes table](#):

- Advanced Scheduling (Location Groups) revisions and off hold
- Fixes for Schedules using Data Frequency fixes.

Aggregation Console

This console, accessed from the System Monitoring menu, provides Administrators with the ability to view and manage Aggregation processing without separate queries or reports. By default, Aggregations that are processing are displayed and the **Refresh** button updates the display. The quick filters allow searching for a specific Aggregation or Status, such as pending or previously completed periods. The Aggregation details can be viewed from the **Calculation Id** link. **Perform Action** allows the status of the Aggregation for a period to be changed, such as Recalculate, On-Hold or Finished.

IMAGE: Aggregation Console - Processing

Aggregation ID	Calculation ID	Data Type	Test Method	Status	Start	End	Calculation Date
7422	19038	Water Loggers	EC Monthly Rolling Avg	Calculating	20/12/2022 23:59:59	20/12/2022 23:59:59	21/12/2022 00:00:23
7428	19038	Water Loggers	EC Monthly Rolling Avg	Calculating	21/12/2022 00:00:00	26/12/2022 23:59:59	21/12/2022 00:01:00
7424	19038	Water Loggers	EC Monthly Rolling Avg	Calculating	01/12/2022 00:00:00	26/12/2022 23:59:59	21/12/2022 00:01:07
7245	19038	Water Loggers	EC Monthly Rolling Avg	Calculating	01/11/2021 00:00:00	30/11/2021 23:59:59	01/12/2021 00:02:13
7071	19038	Water Loggers	EC Monthly Rolling Avg	Calculating	01/08/2021 00:00:00	30/08/2021 23:59:59	01/12/2021 00:08:52
8028	19047	Ambient Air Quality	7 day rolling PM10 median	Calculating	02/08/2021 00:00:00	30/08/2021 23:59:59	11/08/2021 04:20:51
81518	19038	Water Loggers	EC Monthly Rolling Avg	Calculating	01/09/2021 00:00:00	30/09/2021 23:59:59	01/07/2021 00:42:36
8044	19038	Water Loggers	EC Monthly Rolling Avg	Calculating	30/01/2021 00:00:00	26/12/2021 23:59:59	01/03/2021 01:38:08
8001	19038	Water Loggers	EC Monthly Rolling Avg	Calculating	01/01/2021 00:00:00	26/12/2021 23:59:59	01/03/2021 01:38:53
8054	19038	Water Loggers	EC Monthly Rolling Avg	Calculating	01/02/2021 00:00:00	26/12/2021 23:59:59	01/03/2021 01:38:56
80132	19038	Water Loggers	EC Monthly Rolling Avg	Calculating	01/11/2020 00:00:00	30/11/2020 23:59:59	01/12/2020 00:02:26
80405	19038	Water Loggers	EC Monthly Rolling Avg	Calculating	01/09/2020 00:00:00	30/09/2020 23:59:59	01/10/2020 01:38:35
8081	19038	Water Loggers	EC Monthly Rolling Avg	Calculating	01/06/2020 00:00:00	30/06/2020 23:59:59	01/07/2020 00:42:34

1.3 Other improvements

Functionality	Description	Change number
Favourites	Data Views and Reports	EN-9021 EN-9024
Invalid Results	When included in the Data View table highlight invalid Results	EN-9176
Location	Location detail popup includes the Site/s for the Sample Point and on Data Entry Forms	EN-9999 EN-9256
AOC Filters	Added new filters Requirements "Type" and "Evidence Type" into AOC filter bar	EN-8691
Email OAuth Authentication	Support configuration of OAuth authentication for retrieval of email from Exchange Web Services for Data load and Data Entry mailboxes	EN-7617
Login	Hide the EnviroSys login method by default when Office 365 login is enabled. EnviroSys login method accessible using login=internal parameter only. In Mobile modified login page to make Office 365 more prominent.	EN-8618
Forget Password	Available on EnviroSys (Portal) Login	EN-5633
Custom Extracts	SQL Custom Extract Report have formatting improvements and column headers maintain case	EN-9187 EN-9184
Refresh Coordinates	Feature allows administrators to do bulk updates of Sample Point coordinates from Lat/Longs to Northing/Easting and vice versa if relevant details are available for the Sample Point	EN-8145
Groundwater Management	Improvements to Groundwater Management screens for integration with GIM Suite	EN-8796
Data Entry Forms	Now show Location labels	EN-9256

1.4 Fixes

The table below describes the EnviroSys fixes in this release.

Problem number	Problem correction	Subcategory
EN-8579	Improve handling of large Data View exports and prevent memory issues. Maximum number of allowed to export is set in system parameter DATA_VIEW_EXPORT_MAX_SAMPLES.	Data Viewer
EN-8735	Schedules should display correctly in the planning view according to the configured rotational logic for staggering and stacking options	Sample Management
EN-8828 EN-8868	Adding new locations into the schedule and activating the new revision from the current run should not break the rotational logic	Sample Management
EN-9046	On-Holding /Off-Holding locations should not incorrectly affect the schedule rotational logic	Sample Management
EN-9093	Default Lookup Code should be auto-selected on Data Entry Forms (EnviroSys client)	Data Entry Forms
EN-9097	Data Views should highlight when missing Results are for mandatory Test Methods	Data Viewer
EN-9135	Should be able to generate the CoC document for schedules correctly when there are many Tests for the Container	Sample Management
EN-9137	Non-superuser should be able to edit Samples for Programs they have access to	Data Viewer

Problem number	Problem correction	Subcategory
EN-9144	Fixed error introduced with 'schedule on from date' functionality. When enabled this caused error if the start date was not the start of a period, and the subsequent possible amend dates did not line up.	Sample Management
EN-9150	Completeness % should always display correctly by considering the 'received counts' and the 'expected counts'	Data Profile Sample Management
EN-9155	Users should be able to see all available Data Entry Forms when clicking 'Enter Data' from the Menu according to given user access	Data Entry Forms
EN-9197	Sampling Run results counts should correctly display when Data Frequency is configured	Sample Management
EN-9209	Any change into the Location Group of a schedule should re-trigger the runs from the selected new revision date	Sample Management
EN-9220	Rescheduling and reverting should work properly across revisions	Sample Management
EN-9225	Sample Management - Location Groups - "Each location scheduled per', must be less than 'schedule in every"	Sample Management
EN-9238	Adding/Removing locations into a new schedule revision should correctly pick up with the existing rotational scheduling from the new revision start date	Sample Management
EN-9274	Ensure applicable Guidelines should be displayed on Form	Data Entry Forms Guidelines
EN-9302	Changing the group code of a location group in a new revision should activate from the selected revision date	Sample Management
EN-9339	Adding and assessing new or existing Manual Even Driven requirements should work without any error	Compliance
EN-9340	Ensure duplicate assessment attachments are not created for Requirement Assessment after overriding the assessment	Compliance
EN-9344	Users should be able to drill down to see source data from Corporate Reporting extract	Corporate Reporting
EN-9369	Data Profile Options should only be displayed when Graph view is visible	Data Profile
EN-9393	Users who can view Sample Management schedules should be able to enter data using the Schedule	Sample Management Data Entry Forms
EN-9397	Corrected export Search results from the Test Search Page	Classic interface
EN-9401	"Include Samples with no Results" option in advanced mode of Data View should be selected by default to show samples which do not have results but a sample comment	Data Viewer
EN-9423	Sample Schedules using Test Suites should re-trigger when a new version of the Test Suite is created	Sample Management Test Suites
EN-9425	Users should only be able to select applicable Operators when creating Replacement Scheme Rules	EnviroSys (Portal)
EN-9441	Location Picker and Test Method picker is not displaying additions after changing and saving the Data View multiple times without reloading.	Data Viewer
EN-9471	Non-superusers should be able to see Teams as applicable when using the filters in the Compliance List.	Compliance Security

Problem number	Problem correction	Subcategory
EN-9473	Custom Reports: User should not be able to configure Graphs with Raw data for Area Type Area	Reporting
EN-9474	Updated tooltip to correctly reflect which fields cannot be edited	Action Management
EN-9487	Ensure Action List filter refreshes Roles when Team is selected for non-super users	Compliance Security

[EnviroSys version history](#)